



Grown...to meet challenges

30+ years in Process Control Instrumentation

SLA-Series - Admittance Level Limit Switch

Version 2.1

It consists of an evaluation unit, an electronic insert and a probe. The probe is mounted either from top or side of the vessel. The probe comprises sense and shield electrodes, electrically isolated from the metallic tank by the means of a suitable insulator. The two electrodes form an imperfect capacitor with the service material acting as the dielectric.

Principle

An accurate measurement of change in admittance affords an indirect measure of the level of material in the tank. The electronic insert measures this change accurately by using Radio Frequency (R.F.) technique coupled with coat immunizing circuitry. The change is converted to a DC voltage variation, which is transmitted to the evaluation unit via a 3-core cable for further processing. The processed signal is used to energize or de-energize a relay whose output contacts are available for annunciation and/or control.

Approvals CE Marking, RoHS Compliance

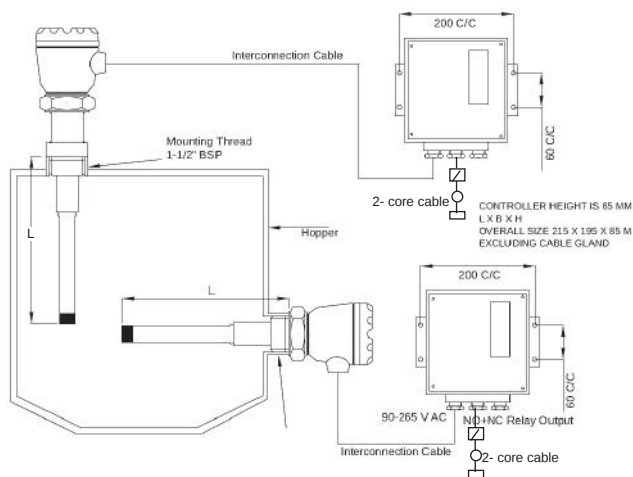


Features

- Coating immunity for viscous liquids & sticky media
- Available in rod as well as rope probe arrangement
- Universal Power supply (90-265 V AC and 24 V DC)
- Calibration possible from remote location
- Fail-safe selection available
- Economical to install using three-core normal cable

Parts

The parts of SLA-Series are explained in Figure 2. The mounting arrangement is described in Figure 1. All dimensions are in millimeters.



Note: Interconnection Cable - Normal 3-core 1.5 sq mm cable

Figure 1: Mounting Arrangement for SLA-Series

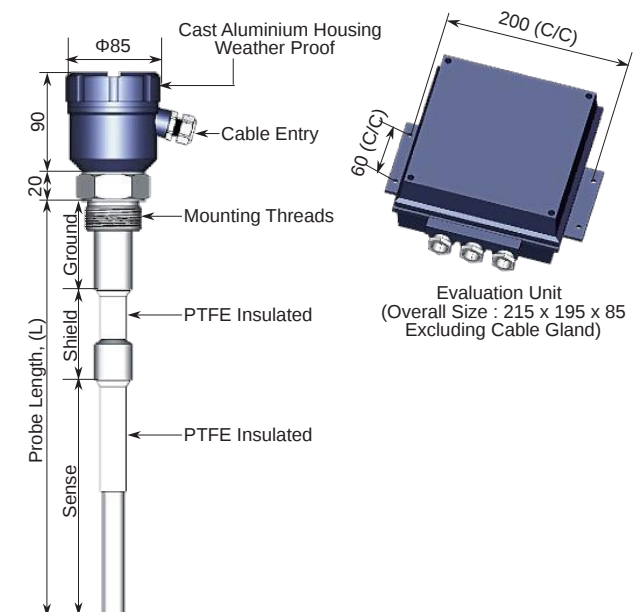


Figure 2: Parts of SLA-Series

Manufacturing Level Instruments & Speed Monitoring Systems

SAPCON INSTRUMENTS PVT. LTD.

An ISO 22000 company

131 Palshikar Colony, Indore, Madhya Pradesh, PIN - 452004, India

+91-731-4757575 (100 lines) Fax: +91-731-2475475

www.sapconinstruments.com Email: sales@sapcon.in





Applications

- Poultry industry
- Packaging industry
- Edible Oil
- Flour and rice mills
- Food industry, FMCG & Sugar
- Foundry & Castings
- Bulk material handling
- Liquids and Solids

Technical Specifications

Evaluation Unit

Housing:	Cast aluminium weatherproof / back panel / Integral housing / Flameproof housing
Cable Entry:	3 No 1/2, 3/4 BSP / NPT / ET, type SC and DC
Temperature:	Ambient: -20°C to + 60°C
Mains Voltage:	90 to 265VAC, 24 V DC
Relay Output:	01/02 SPDT Rated on 6A, 230 V AC, potential-free
Fail-safe:	Field Selectable
Minimum:	Fail-safe Low
Maximum:	Fail-safe High
Indication:	LED Indication (Alarm: Red, Normal: Green, System Fault: Yellow)
Switching Delay:	0.5-25 seconds (Covered and Uncovered)
Switching Hysteresis:	0.5 pf Typical
Cable to Elec. Insert:	3 Core cable (Ordinary cable)

Electronic Insert

Housing:	Plastic, plotted in epoxy resin
Measuring Frequency:	500 K Hz (app.)
Temperature:	Ambient: -20°C to + 80°C
Supply Voltage:	15 V DC from electronic unit
Output Signal:	3 to 12 V DC

Probe

Enclosure:	Cast aluminium IP-65, IP-67, Flameproof (Gas groups IIA, IIB)
Cable Entry:	01 single / double compression
Mounting Arrangement:	Threaded / Flanged as required
Probe Insulation:	Part / Full PTFE
Temperature Range:	Full / Part PTFE: up to 650°C; Part Ceramic: 250°C to 600°C
Probe Length:	As per requirement

Model Selection

SLA-SERIES

POWER SUPPLY

- A- 110V AC, 50Hz
- B- 230V AC, 50Hz
- D- 24 V DC
- U- UNIVERSAL POWER SUPPLY (90 - 260 VAC)

ELECTRONICS

- 1- SINGLE RELAY
- 2- DOUBLE RELAY
- 3- SINGLE RELAY WITH TIME DELAY
- 5- SINGLE RELAY WITH PUMP CONTROL LOGIC
- 6- TWO RELAY WITH TIME DELAY
- 7- TWO RELAY WITH PUNP CONTROL LOGIC
- 8- TWO-CHANNEL MODEL, ONE SEPARATE RELAY PER SET POINT (ONLY IN SEPARATE MODEL)
- 9- THREE-CHANNEL MODEL, ONE SEPARATE RELAY PER SET POINT (ONLY IN SEPARATE MODEL)

MODEL

- 22- SEPARATE (RF TRANSMISSION VIA SPECIAL CABLE)
- 30- INTEGRAL ELECTRONICS UNIT

SERVICE TEMPERATURE

- S- STANDARD UP TO 80°C
- H1- HIGH TEMPERATURE MAX 150°C
- H2- HIGH TEMPERATURE 150°C TO 250°C
- H3- HIGH TEMPERATURE 350°C TO 450°C
- H4- HIGH TEMPERATURE 600°C WITH COOLING FIN

SENSE / EXTENSION ELEMENT TYPE

- RP- PART INSULATED ROD PROBE
- RF- FULL INSULATED ROD PROBE
- FP- PART INSULATED FLEXIBLE ROPE PROBE

PROBE MOUNTING

ARRANGEMENT*

- T- THREADED
- F- FLANGED
- O- OTHER

WETTED PARTS

- S4- SS 304
- S6- SS 316
- SL- SS 316L

SLA U 1 22 H1 RP F S4

Connect to us

Management: +91 98260 80207 ashwin@sapcon.in

Customer Support: +91 80850 77767 support@sapcon.in

